

BUNDLE CONTENTS	1
MIDI FRAGMENTS	1
IMPORTANT HI-HAT REMINDERS	3
MIDI BLENDING FEATURE - FL STUDIO ONLY	4
WAV FRAGMENTS	5
SPECIAL 808 SLIDES	6

THIS FREE DEMO CONTAINS:

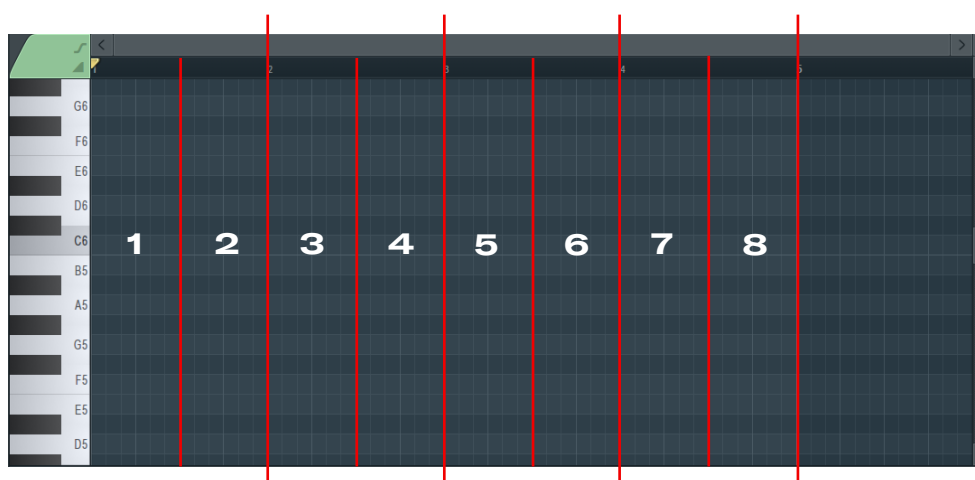
MIDI PACK	110 - total midi fragments for super-trap hihats rolls, snare rolls, 808 rolls, open hats, main kicks and main snares
WAV FRAGMENTS	40 - WAV Fragments, our hi-hat midi fragments exported as wav files with added FX
DRUM KIT	40 - supertrap drum shots crafted from scratch
MELODY LOOPS	8 - original supertrap melodies. Stems not included in free demo
MELODY MIDIS	Not included in free demo

USING MIDI FRAGMENTS:

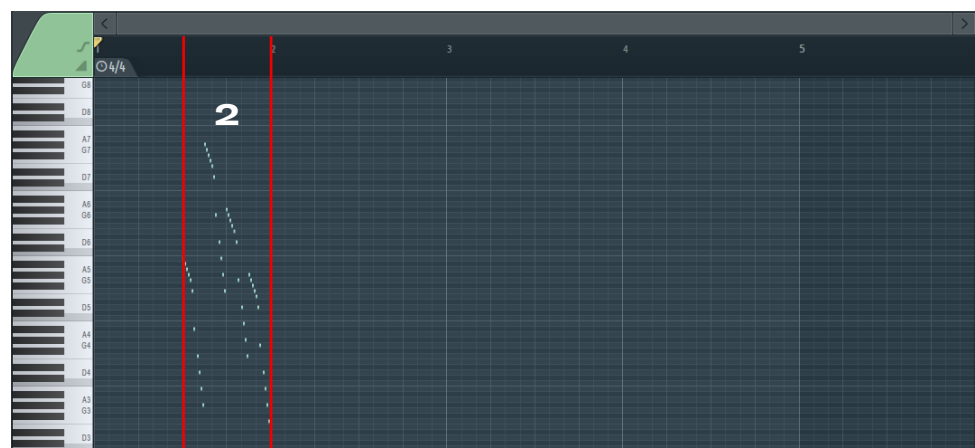
MIDI FRAGMENTS are bite-sizes MIDI files, unlike MIDI loops which are pre-arranged, MIDI Fragments can be pieced together like lego bricks to create custom full patterns, giving producers endless combinations and greater freedom.

FOR HI-HAT FRAGMENTS - we have split 4 bars into 8 sections. Each 1 bar has 2 section.

Each one of the 8 folders contains midi that go into the specified section.



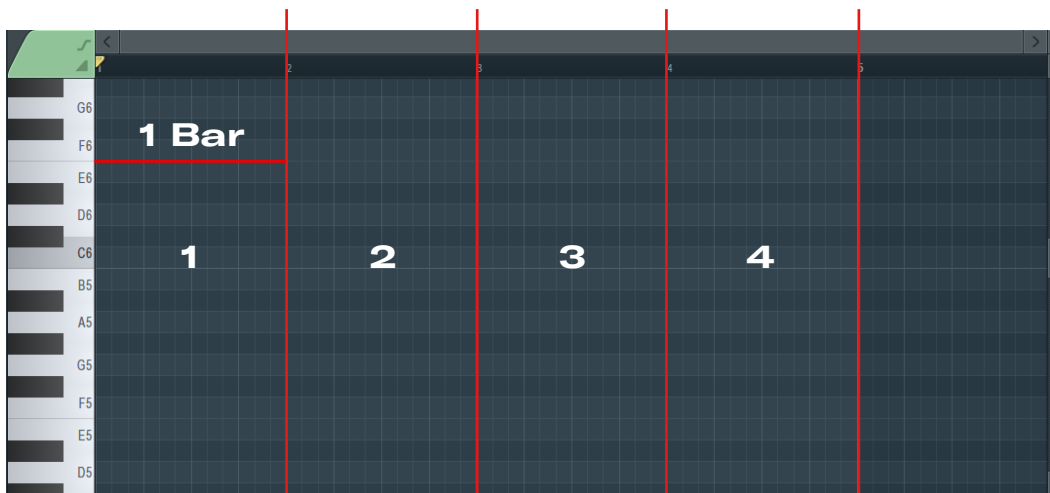
FOR EXAMPLE - a midi from folder 2 places a roll on section 2.



FOR SNARE ROLLS AND 808s - we have split 4 bars into 4 sections. Each 1 bar is 1 section.

Each one of the 4 folders contains MIDI that go into the specified section.

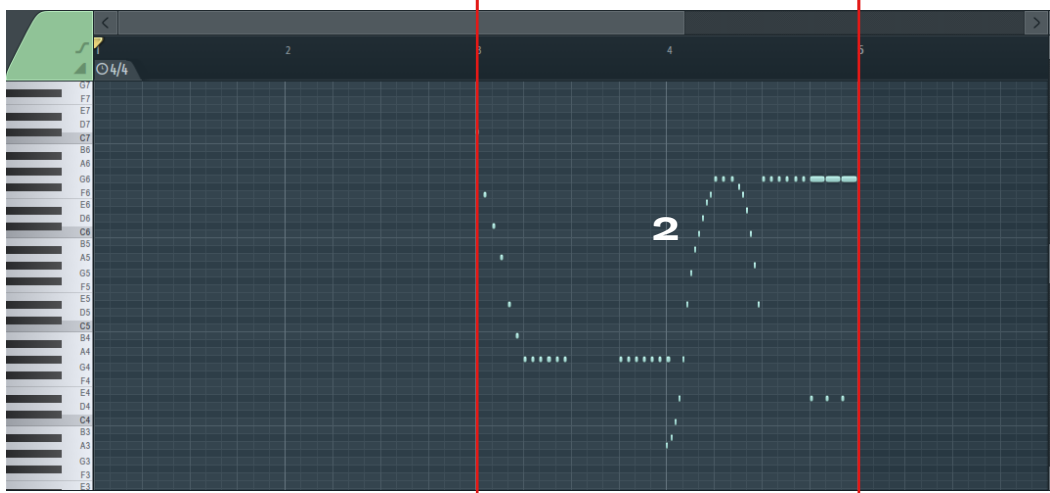
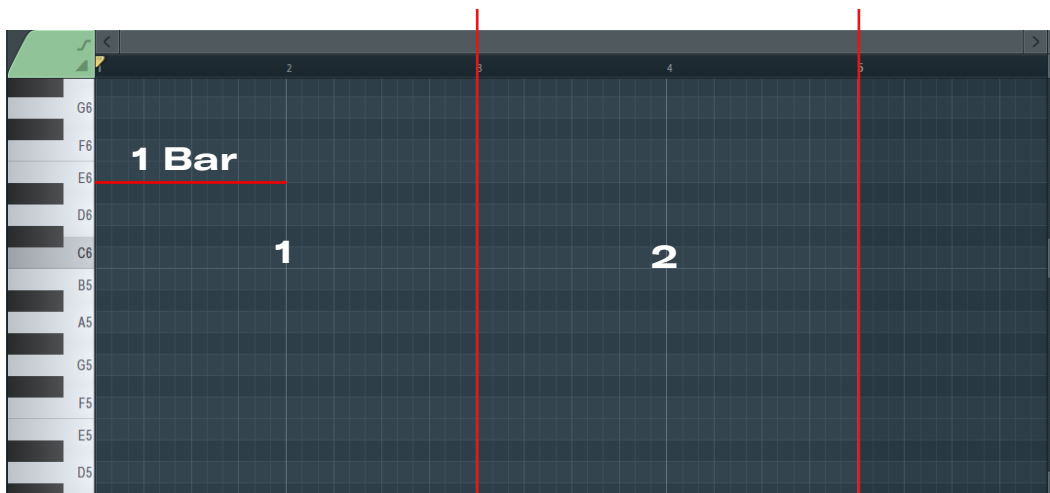
FOR EXAMPLE - a MIDI from folder 2 places a roll on section 2.



FOR OPEN-HATS, MAIN KICKS AND MAIN SNARES - we have split 4 bars into 2 sections. Every 2 bars is 1 section.

Each one of the 2 folders contains MIDI that go into the specified section.

FOR EXAMPLE - a MIDI from folder 2 places a roll on section 2.



IMPORTANT HI-HAT REMINDER

SUPERTRAP hi-hat rolls are often intricate and go very low pitched.

This will result in a very muddy and distorted sound. To avoid this, we need to adjust the envelope of the sample.



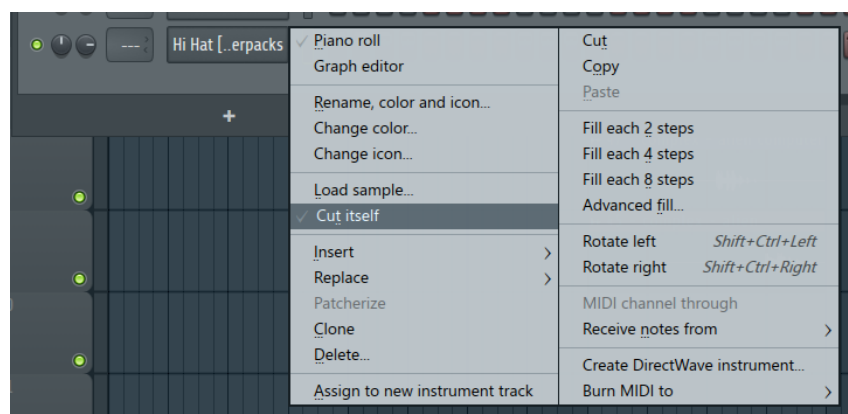
DO THIS FOR ALL YOUR DRUM SAMPLES

Open the envelope setting of your sample, and adjust the knobs until they look like a square in this picture.



DO THIS FOR ALL YOUR DRUM SAMPLES

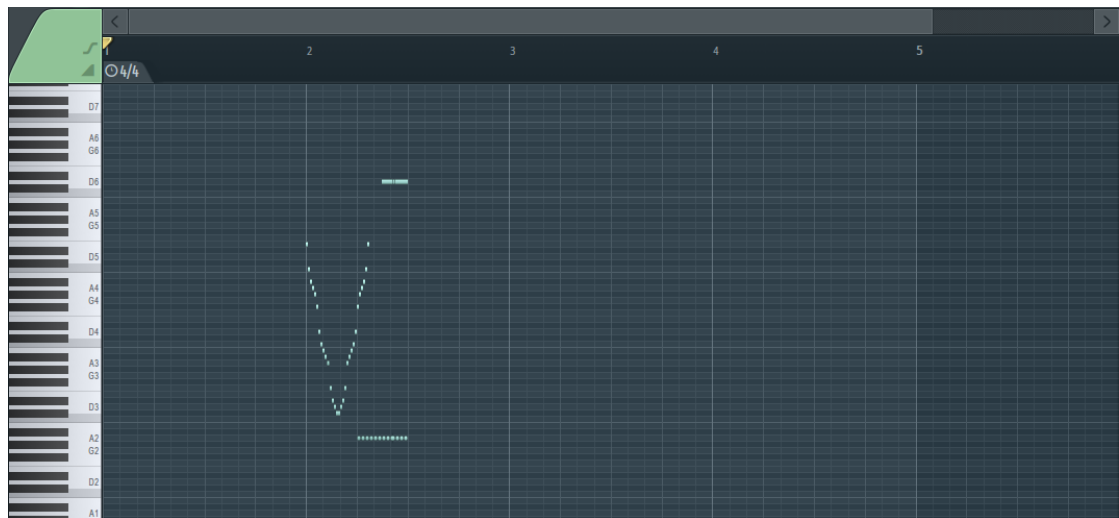
Lastly, to stop long notes overlapping, make sure you enable the CUT ITSELF function for the sample.



THE MIDI BLENDING FEATURE is unique to SYFER MIDIS. This feature allows users to combine and overlay multiple MIDI fragments in the same MIDI piano roll without deleting the existing MIDIS, allowing users to create complex MIDI patterns efficiently by merging MIDI fragments.

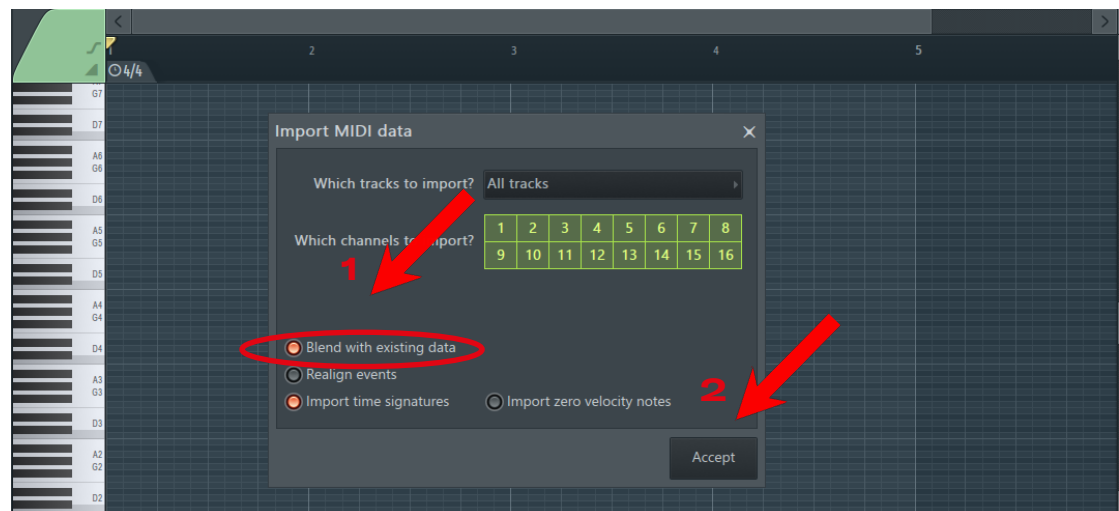
So far, this feature only exists in FL Studio. Other DAW users can skip this section!

STEP 1 - Place in your first MIDI fragment onto the piano roll.



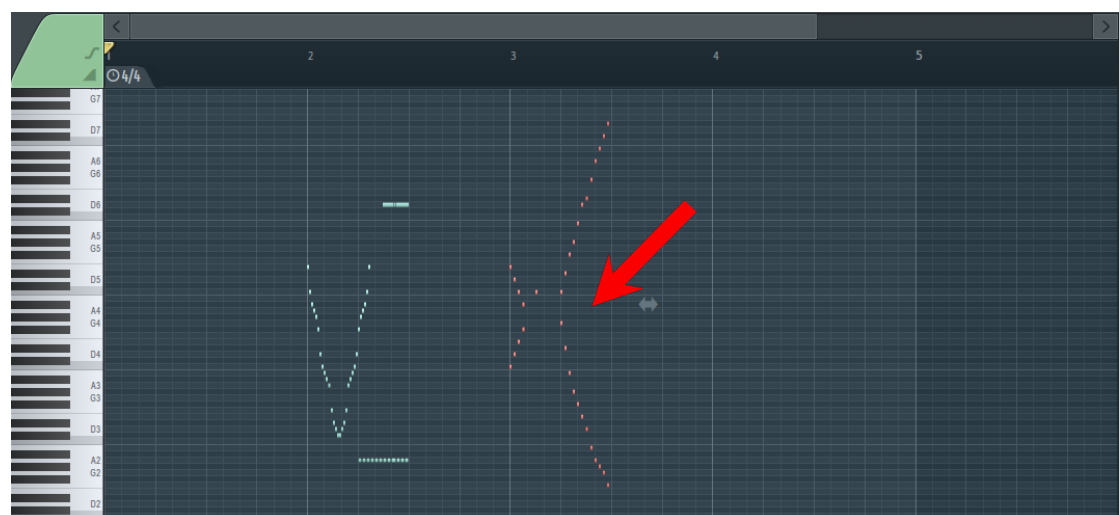
STEP 2 - When dragging in a second MIDI fragment, a pop-up menu will appear.

You must select **BLEND WITH EXISTING DATA**, and then click **ACCEPT**.



STEP 3 - Now you placed a new MIDI fragment on the same piano roll without deleting the previous one .

Repeat this process as many times as you want and discover infinite drum pattern combinations.

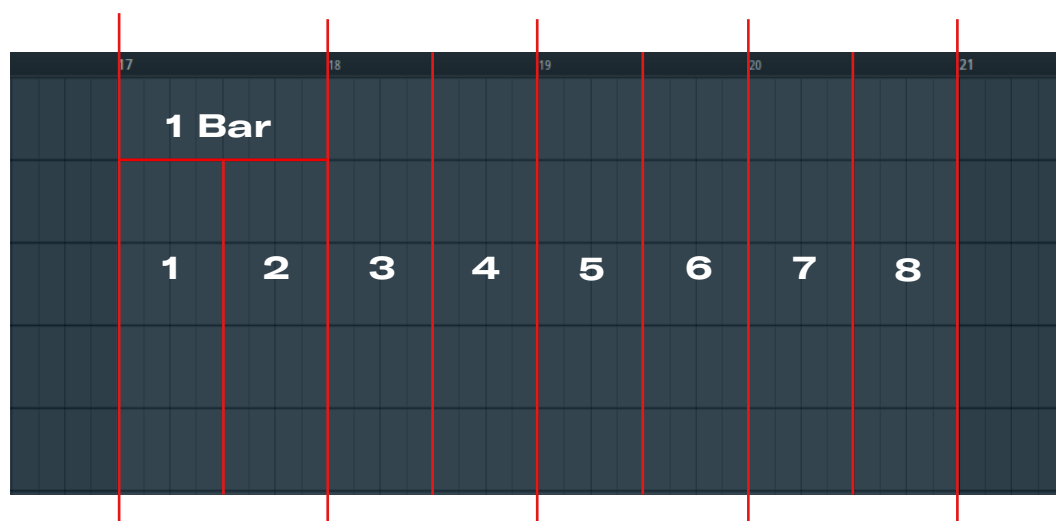


USING WAV FRAGMENTS

WAV FRAGMENTS are MIDI Fragments exported into WAV stems with bonus added Supertrap effects. They can be dragged and dropped into your beats quickly for instant inspiration and rapid results.

WAV FRAGMENTS - are used in the playlist, not in the MIDI piano roll.

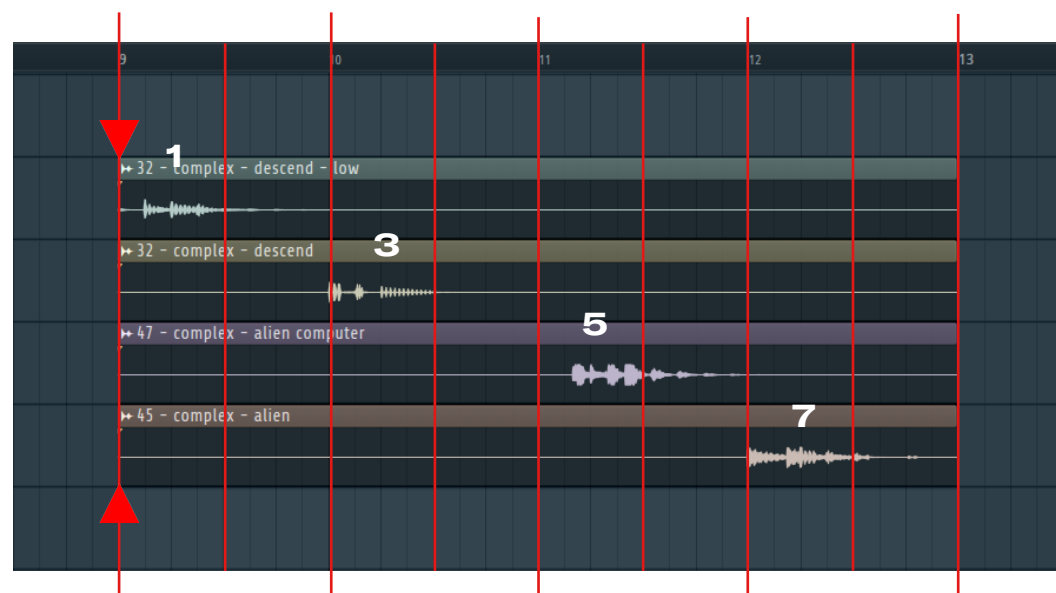
Like hi-hat fragments, we have split 4 bars into 8 sections. Each folder contains a WAV Fragment for that specific section in the 4 bars.



HOW TO USE -

Each WAV Fragment is exported with correct spacing in front and the back of the roll to position it in the right sections.

Simply line each WAV Fragment to the start of the bar, and the rolls will correctly position themselves.



FOR EXAMPLE - here we used 4 different WAV Fragments. From folders 1, 3, 5 and 7.

Align them to the start of the bar and the rolls position themselves in the right sections to form a full hi-hat pattern

EACH WAV FRAGMENT is directly exported from a MIDI Fragment. So if you want to change the sound, FX or pattern itself, you can find the identical MIDI Fragment and edit it.

The hi-hat fragment will have the same name and folder location, just in the hi-hat fragments folder.



SOME 808 SLIDE MIDIS ARE MARKED WITH N.E. AT THE END

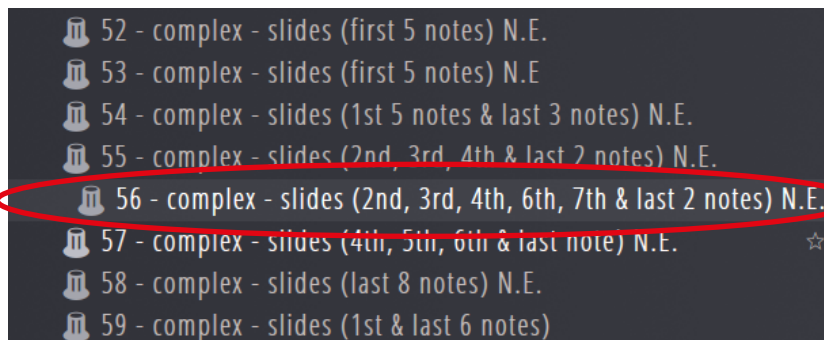
N.E. stands for "NO ENVELOPE"

That means when using these special 808 slide MIDIs, make sure that you do NOT touch the envelope. Either turn it off, or do not touch it when dragging the sample in. Or else the slides will not work.

Additionally, N.E. 808 slide MIDIs only work for longer 808 samples.



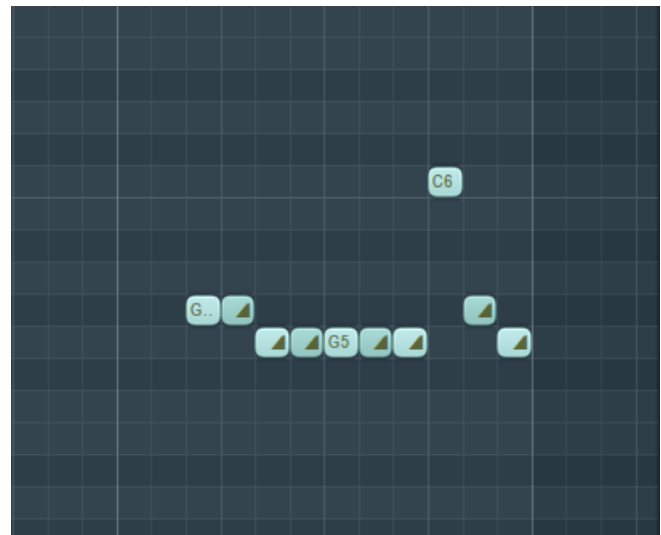
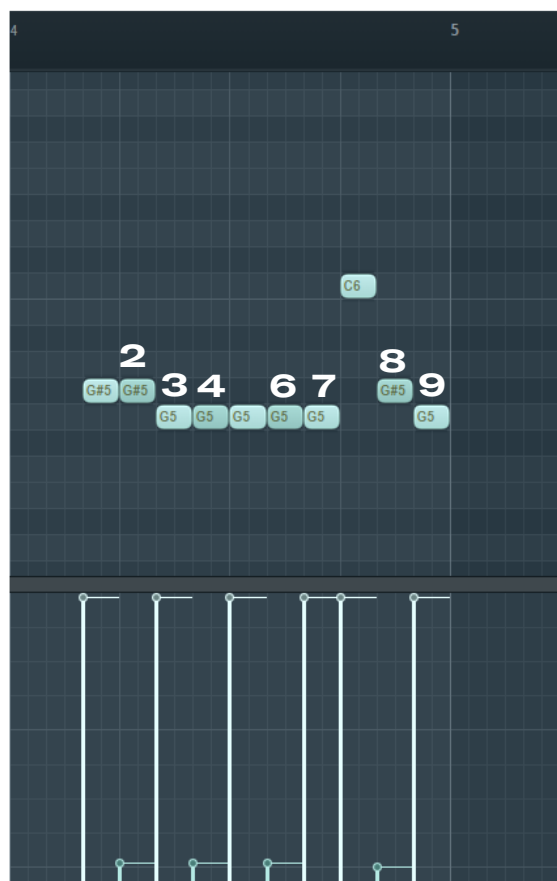
But you can enable CUT ITSELF!



Its hard to tell which notes are slide notes for N.E. 808 slide MIDIs.

Thats why we have marked the slide notes in the name of the file.

Just change the marked notes to slides!



FOR EXAMPLE - This N.E. 808 MIDI marked the notes 2nd, 3rd, 4th, 6th, 7th and last 2 notes as slide notes.

So we'll identify the correct notes, and change them to slide notes!